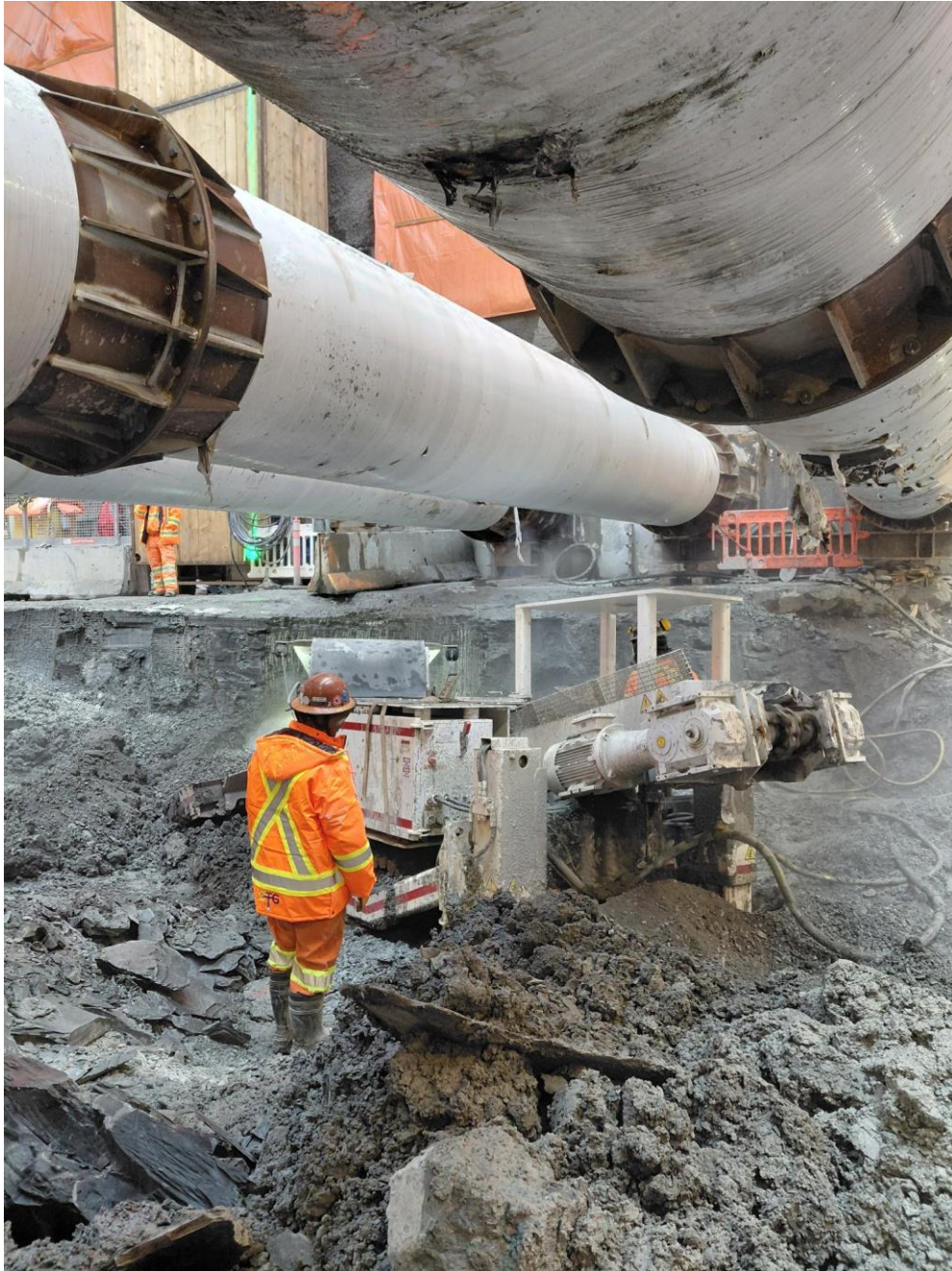


Queen-Spadina South Construction Site Update - November 18, 2025



The final stages of excavation are underway at the Queen-Spadina south site, using a roadheader to minimize impact to the community.

Construction Overview

- The final stage of excavation is underway at the Queen-Spadina south site.
- The current excavation cycle, which includes rock breaking and structural work, is expected to continue through early 2026.
- As early as November 19, 2025, the hours of work at the south site will be adjusted to reflect the current stage of work and efficiently complete the required excavation activities.
 - Work is expected to start at 7 a.m. and continue up to 2 a.m., Monday through Friday. Crews may also work on Saturday and Sundays from 7 a.m. to 5 p.m.
- All work schedules are subject to change, and weather permitting.

What to expect

During active construction, residents will notice trucks and machinery in operation at the site. To minimize noise levels, the following measures are currently in place:

- Crews adjust excavation equipment by using smaller machines or alternative attachments, like a ripper attachment or roadheader, to reduce noise. However, in confined spaces near walls or structural supports, they must use the excavator with the hammer attachment with a noise blanket.
- Adjusted the volume of the lifting alarm in response to community feedback. The construction site uses a lifting alarm to keep workers safe. This alarm warns workers when materials or machines are being lowered into or raised from the excavated shaft. The alarm has been in use for nearly a year.
- Broadband backup alarms on machinery and trucks, wherever it is safe to do so. Trucks visiting the site regularly without this feature will be asked to leave. It is important to note that some trucks making occasional deliveries may not have this feature.

The following measures are being added during extended working hours (11 p.m. to 2 a.m.):

- To complete this work efficiently and minimize impact on the neighbours, a roadheader has been added to the site to assist with excavation.
 - A roadheader is a specialized piece of equipment used for tunnelling. These machines use a rotating cutter head to cut through rock, as well as a pivoting arm for flexibility in the shape of the space it excavates. This maneuverability allows it to work in smaller, more restricted areas, with less impact on the community than a traditional hammer-style excavator.
 - The roadheader is expected to be the primary equipment in use during extended hours of work, when required.
- Materials will be removed via the Queen-Spadina north site only between 11 p.m. and 2 a.m., to minimize the use of the crane and movement of machinery at the south site.
- Noise and vibration monitoring remains in place to track the impact of machinery in use at site.
- Learn more about the measures we take to keep communities safe as we build more transit connections: **[metrolinx.com/KeepingCommunitiesSafe](https://www.toronto.ca/metro/keeping-communities-safe/)**
- For more information about upcoming station work, please visit **[metrolinx.com/ontarioline](https://www.toronto.ca/metro/ontarioline/)** or sign up for our e-newsletter.

Contact us:
Call us 24/7 at: [416-202-5100](tel:416-202-5100)
Write to us at: ontarioline@metrolinx.com
Find us on X, Facebook, and Instagram:
[@ontarioline](#)
Visit the website:
www.metrolinx.com/ontarioline

Visit our community offices:
770 Queen Street East (near Queen & Broadview)
General hours:
Mondays, Tuesdays, and Fridays: 9 a.m. to 5 p.m.
Wednesdays: 1 p.m. to 6 p.m.
Thursdays: 10 a.m. to 6 p.m.

810 Danforth Avenue (near Queen & Broadview)
General hours:
Monday – Friday, 9 a.m. to 5 p.m.

Thorncliffe Park:
East York Town Centre
45 Overlea Blvd., Toronto, ON M4H 1C3
Unit 153 (across from the Rogers store)
General hours:
Monday – Friday, 9 a.m. to 5 p.m.